



Save the date



**KidZonia School
Holiday Program**
Bounce Inc
12.00pm – 2.00pm
Fri 3rd July 2026



**Sunshine North
Consultation**
Communal Room in Building A
3.00pm - 6.00pm
Thurs 27th August 2026



**Women's Coffee
MeetUP**
Ascot Leisure Centre Cafe
11.00am - 12.00pm
Wed 9th September 2026

Dunlop Ave meet up

We had so much fun hosting 20 of our Dunlop renters to a day of community connection over delicious BBQ and pizza. Renters had the opportunity to sit with Evolve Housing employees and create candles while discussing any concerns they may have while also completing the Renter Satisfaction Survey. With the music playing in the background, our renters enjoyed connecting with their neighbours and creating new friendships. A huge thank you to everyone who showed up!



Acknowledgment of Country:

Evolve Housing acknowledges the Traditional Custodians of the land where we deliver our housing services. We acknowledge and pay our respects to all Elders past, present and future. We welcome all First Nations Peoples to our services, as we walk together towards reconciliation.

Meet our team

#MEETEVOLVE gives you a better insight into who we are as your support team! In this edition we interview Shaylee who is the new Housing Manager, someone you may have already met!

How long have you been working at Evolve Housing?

I started working at Evolve Housing mid-February this year.

What were you doing before you came to Evolve Housing?

I previously worked in social housing for Department of Families, Fairness & Housing.

What made you want to work at Evolve Housing?

I was really drawn to Evolve Housing's strong focus on supporting communities and making a meaningful difference in people's lives. The organisation's values align closely with my own, and I was excited about the opportunity to contribute to a team that is committed to providing stable housing for those who need it the most.

What kind of tasks does your job involve – what is a typical day like for you?

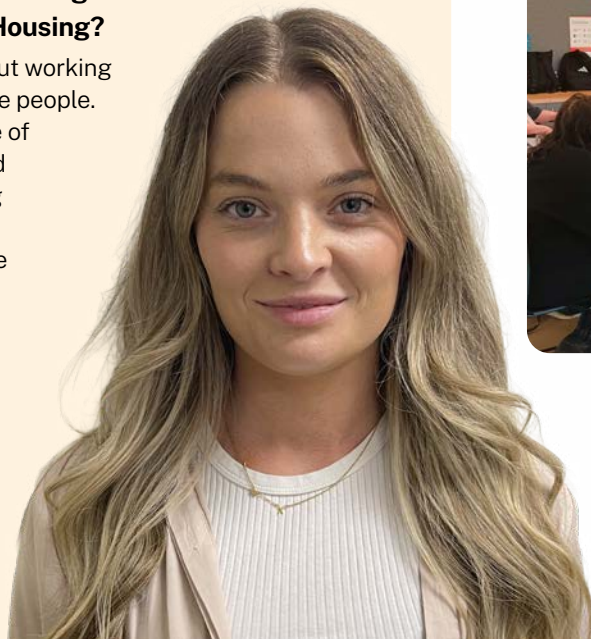
My role as Housing Manager is quite varied. A typical day can include supporting my team, working through tenancy matters, liaising with internal and external stakeholders, and ensuring we're delivering strong outcomes for our renters. No two days are the same, which makes the role both challenging and rewarding.

What kind of impact do you think your role has on renters?

I believe my role has a meaningful impact by helping ensure renters feel supported and secure in their housing. By working collaboratively, we aim to provide consistent, fair and responsive services that contribute to positive renter experiences.

What's your favourite thing about working for Evolve Housing?

My favourite thing about working at Evolve Housing is the people. There is a strong sense of teamwork and a shared commitment to making a difference, which creates a really positive and supportive work environment.



RAG chat

(Renters Advisory Group)

The Renters Advisory Group (RAG) has been busy meeting each month and working through a range of important topics relevant to renters.

At their most recent meetings, members discussed the development of a small project aimed at supporting the Dunlop Avenue and Sunshine North communities to maintain cleaner shared spaces. The group is also brainstorming ideas to share with renters on how to keep our communities clean.

The RAG also met with Evolve Housing's Marketing team and provided feedback and suggestions on some improvements they would like to see in our newsletters and communications. These ideas included offering translated options to support our CALD communities, more photos to highlight our renters' involvement in activities, and the fun competitions!

We thank the RAG for their ongoing contributions.



Upcoming events

JULY

KidZonia School Holiday Program

Open to Dunlop Ave
and Sunshine North renters

Fri 3rd Jul | 12.00pm – 2.00pm

Bounce Inc

Hangar 4/236 Wirraway Road,
Essendon Fields VIC 3041



Registrations are open
from 15 - 26 June 2026.

SCAN TO REGISTER

Women's Coffee MeetUp

Open to Dunlop Ave
and Sunshine North renters

Wed 8th Jul | 11.00am - 12.00pm

Ascot Leisure Centre Cafe

Corner Epsom Road &, Langs Road,
Ascot Vale

To RSVP, please contact:

Eliza on **0421 348 040**

Picnic at Victory Park

MUMS AND BUBS PROGRAM

Open to Dunlop Ave
and Sunshine North renters

Wed 22nd Jul | 12.00pm – 1:30pm

Victory Park

Corner of Epsom Road &, Langs Road,
Ascot Vale

To RSVP, please contact:

Eliza on **0421 348 040**

AUGUST

Communal Garden workshop

Open to Dunlop Ave renters

Thur 20th Aug | 1:30pm – 3.00pm

Happy Life Garden

Outside up the stairs next to
28 Dunlop Ave, Ascot Vale

To RSVP, please contact:

Eliza on **0421 348 040**

Story Time at Library

MUMS AND BUBS PROGRAM

Open to Dunlop Ave
and Sunshine North renters

Wed 26th Aug | 11.00am – 12.00pm

Footscray Library

56 Paisley Street, Footscray 3011

To RSVP, please contact:

Eliza on **0421 348 040**

Sunshine North Consultation

Open to
Sunshine North renters

Thur 27th Aug | 3.00pm - 6.00pm

Communal Room

Building A, 400 Duke Sreett,
Sunshine North 3023

To RSVP, please contact:

Eliza on **0421 348 040**

SEPTEMBER

Women's Coffee MeetUP

Open to Dunlop Ave
and Sunshine North renters

Wed 9th Sept | 11.00am - 12.00pm

Ascot Leisure Centre Cafe

Corner Epsom Road &, Langs Road,
Ascot Vale

To RSVP, please contact:

Eliza on **0421 348 040**

Story Time at Library

MUMS AND BUBS PROGRAM

Open to Dunlop Ave
and Sunshine North renters

Wed 16th Sept | 11.00am – 12.00pm

Footscray Library

56 Paisley Street, Footscray 3011

To RSVP, please contact:

Eliza on **0421 348 040**

Communal Garden workshop

Open to Dunlop Ave renters

Thur 17th Sept | 1:30pm – 3.00pm

Happy Life Garden

Outside up the stairs next to
28 Dunlop Ave, Ascot Vale

To RSVP, please contact:

Eliza on **0421 348 040**

Competition corner



WIN

a ZONE BOWLING gift card!

To keep your family busy during the winter school holidays we will be running a "Find-a-word" competition.

THE PRIZE

We have 2 prizes to give away. Each winner will get 1 x \$50 Zone Bowling gift card.

HOW TO ENTER

Locate the listed words in the grid that are horizontally, vertically and diagonally correctly, then take a photo of the completed find-a-word when you're done. Send the photo by **SMS to the Community Engagement team on 0421 348 040**. Use the subject line "Winter." Please include **your full name, Evolve Housing address and phone number**.

All correct entries will go into the running to win, then we will draw 2 winners randomly.

Please note you must be an Evolve Housing resident to enter.

Entries close midday **Tuesday 30th June 2026**, and we will contact the winners directly.

| | | | | | | | | | | | | | | | | | | | |
|---|---|---|---|---|---|---|---|---|---|---|---|---|---|---|---|---|---|---|---|
| Z | Z | P | M | D | L | O | D | X | F | K | L | M | W | T | V | Z | H | I | V |
| F | N | U | L | F | V | T | M | F | W | Z | B | S | J | X | U | U | V | F | W |
| J | T | W | N | C | X | W | C | B | F | O | J | U | L | Y | O | P | A | M | Q |
| H | K | W | G | P | L | C | O | X | C | F | U | Y | W | I | N | T | E | R | Y |
| N | E | I | F | A | R | J | C | R | J | R | S | K | R | R | O | R | B | H | J |
| M | E | U | N | S | M | A | W | Z | F | Y | O | N | W | C | C | X | N | F | O |
| X | F | D | O | Q | U | M | I | A | Z | J | V | S | A | N | S | C | B | D | Q |
| P | I | I | P | M | W | Z | O | N | W | C | L | G | U | F | X | J | J | S | W |
| M | A | Z | W | C | D | Z | N | B | Q | O | K | Z | E | Q | A | Q | U | W | I |
| F | M | T | D | I | O | M | Y | Z | M | L | Q | Z | O | M | T | S | Y | I | P |
| X | I | A | Q | R | N | O | D | E | Q | D | P | F | E | F | O | G | D | N | I |
| H | F | Q | H | S | Y | N | H | A | A | Q | H | X | R | N | J | Q | S | D | U |
| Y | H | A | D | R | G | N | J | X | E | M | T | N | W | O | A | Z | P | Q | A |
| A | U | G | U | S | T | V | Y | K | F | F | K | L | D | P | S | S | D | P | J |
| T | K | X | K | A | P | G | G | J | Q | W | U | L | L | G | D | T | C | B | K |
| R | L | F | N | J | U | B | G | D | D | U | Q | F | F | U | D | Z | Y | X | S |
| H | M | R | G | P | X | Y | J | O | T | L | X | I | Q | C | G | A | J | E | V |
| U | Z | Q | T | W | D | F | D | U | T | K | S | R | E | M | O | B | M | N | T |
| T | C | H | I | L | L | Y | W | A | N | H | V | S | C | L | W | O | H | P | N |
| R | Z | J | U | J | A | S | V | D | S | E | T | J | L | J | X | C | L | A | L |

Winter
Chilly
Rain

August
June
Cool

Frosty
July
Damp

Cold
Wind
Fog

Parking rules

We would like to remind everyone that parking continues to be an ongoing issue within the building and ask for your cooperation to ensure fair and proper use of all parking areas.

Basement car park renters are required to park only in their allocated parking spaces at all times. Parking in unassigned or visitor spaces is not permitted.

Please also note that the visitor car park is strictly for short-term, timed visitor parking only. It is intended for genuine visitors and must not be used by residents or renters for regular or extended parking.

Compliance with these arrangements helps maintain access, safety, and fairness for all residents and visitors.

Thank you for your understanding and cooperation.



Send your compliment or complaint to:

ihear@evolvehousing.com.au

1800 693 865

or scan the QR code for our compliments, complaints and appeals forms



How to lodge an appeal

If you are unhappy about a decision made about your tenancy you can lodge an appeal within three months from the date of the original decision. To lodge an appeal, fill out our Appeals form on our website by scanning the QR code above or contact our office on 1800 693 865